

catena-Poly[[[(2,2'-bipyridine- κ^2 N,N')-cobalt(II)]- μ -(*E*)-3,3'-(but-2-ene-2,3-diyl)dibenzoato- κ^4 O,O':O'',O''']hemihydrate]

 Zong-Sheng Li^a and Seik Weng Ng^{b,c,*}

^aCollege of Safety and Environmental Engineering, Capital University of Economics and Business, Beijing 100070, People's Republic of China, ^bDepartment of Chemistry, University of Malaya, 50603 Kuala Lumpur, Malaysia, and ^cChemistry Department, King Abdulaziz University, PO Box 80203 Jeddah, Saudi Arabia
Correspondence e-mail: seikweng@um.edu.my

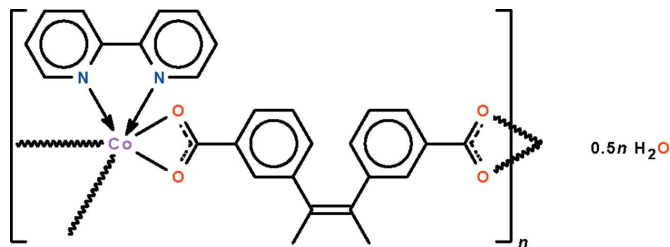
Received 9 October 2011; accepted 10 October 2011

Key indicators: single-crystal X-ray study; $T = 293$ K; mean $\sigma(\text{C}-\text{C}) = 0.004$ Å; disorder in solvent or counterion; R factor = 0.045; wR factor = 0.119; data-to-parameter ratio = 17.3.

The title coordination polymer, $\{[\text{Co}(\text{C}_{18}\text{H}_{14}\text{O}_4)(\text{C}_{10}\text{H}_8\text{N}_2)] \cdot 0.5\text{H}_2\text{O}\}_n$, features a helical polymeric chain that runs along the b axis. The Co atoms are chelated by the carboxylate groups of two 3,3'-(but-2-ene-2,3-diyl)dibenzoate ligands and the N atoms of a 2,2'-bipyridine ligand. The lattice water molecule is disordered about a center of inversion and is connected to the chain by an O—H...O hydrogen bond. The Co^{II} atom shows a distorted octahedral coordination.

Related literature

For a review of the adducts of metal carboxylates with 2,2'-bipyridine-like ligands, see: Ye *et al.* (2005). For details of the synthesis, see: McMurry (1989).



Experimental

Crystal data

$[\text{Co}(\text{C}_{18}\text{H}_{14}\text{O}_4)(\text{C}_{10}\text{H}_8\text{N}_2)] \cdot 0.5\text{H}_2\text{O}$
 $M_r = 518.41$
 Monoclinic, $P2_1/n$
 $a = 8.7028$ (9) Å
 $b = 19.872$ (2) Å
 $c = 14.5181$ (14) Å
 $\beta = 97.845$ (2)°
 $V = 2487.2$ (4) Å³
 $Z = 4$
 Mo $K\alpha$ radiation
 $\mu = 0.73$ mm⁻¹
 $T = 293$ K
 $0.28 \times 0.17 \times 0.05$ mm

Data collection

Bruker SMART APEX diffractometer
 Absorption correction: multi-scan (SADABS; Sheldrick, 1996)
 $T_{\min} = 0.822$, $T_{\max} = 0.965$
 14695 measured reflections
 5667 independent reflections
 3153 reflections with $I > 2\sigma(I)$
 $R_{\text{int}} = 0.046$

Refinement

$R[F^2 > 2\sigma(F^2)] = 0.045$
 $wR(F^2) = 0.119$
 $S = 0.96$
 5667 reflections
 327 parameters
 6 restraints
 H-atom parameters constrained
 $\Delta\rho_{\text{max}} = 0.23$ e Å⁻³
 $\Delta\rho_{\text{min}} = -0.20$ e Å⁻³

Table 1

Hydrogen-bond geometry (Å, °).

$D-H\cdots A$	$D-H$	$H\cdots A$	$D\cdots A$	$D-H\cdots A$
O1w—H11...O1	0.84	1.98	2.812 (5)	173

Data collection: APEX2 (Bruker, 2005); cell refinement: SAINT (Bruker, 2005); data reduction: SAINT; program(s) used to solve structure: SHELXS97 (Sheldrick, 2008); program(s) used to refine structure: SHELXL97 (Sheldrick, 2008); molecular graphics: X-SEED (Barbour, 2001); software used to prepare material for publication: publCIF (Westrip, 2010).

We thank the Beijing Municipal Commission of Educational S&T Development Foundation (KM201010038002) and the University of Malaya for supporting this study.

Supplementary data and figures for this paper are available from the IUCr electronic archives (Reference: BT5671).

References

- Barbour, L. J. (2001). *J. Supramol. Chem.* **1**, 189–191.
 Bruker (2005). APEX2 and SAINT. Bruker AXS Inc., Madison, Wisconsin, USA.
 McMurry, J. E. (1989). *Chem. Rev.* **89**, 1513–1524.
 Sheldrick, G. M. (1996). SADABS. University of Göttingen, Germany.
 Sheldrick, G. M. (2008). *Acta Cryst.* **A64**, 112–122.
 Westrip, S. P. (2010). *J. Appl. Cryst.* **43**, 920–925.
 Ye, B.-H., Tong, M.-L. & Chen, X.-M. (2005). *Coord. Chem. Rev.* **249**, 545–565.

supplementary materials

Acta Cryst. (2011). E67, m1546 [doi:10.1107/S1600536811041699]

***catena*-Poly[[[(2,2'-bipyridine- κ^2N,N')cobalt(II)]- μ -(*E*)-3,3'-(but-2-ene-2,3-diyl)dibenzoato- $\kappa^4O,O':O'',O'''$] hemihydrate]**

Z.-S. Li and S. W. Ng

Comment

Meta(II) dicarboxylates generally adopt three-dimensional polymeric architectures as the carboxyl $-\text{CO}_2$ ends of the dianion are both capable of binding to more than one metal atom. The three-dimensional motifs can be altered to two-dimensional layers or even linear chains through the formation of adducts with 2,2'-bipyridine like ligands; the molecular architectures of such adducts of metal carboxylates with such α,α' -dimine ligands have been reviewed (Ye *et al.*, 2005).

We have synthesized (*E*)-3,3'-(but-2-ene-2,3-diyl)dibenzoic acid in a multi-step synthesis for use in another research project; we have used this rigid dicarboxylic acid to form a coordination polymer as no derivatives of this acid have been reported. The dicarboxylate ion of the coordination polymer, $[\text{Co}(\text{C}_{10}\text{H}_8\text{N}_2)(\text{C}_{18}\text{H}_{14}\text{O}_4) \cdot 0.5\text{H}_2\text{O}]_n$ (Scheme I, Fig. 1), has its carboxyl $-\text{CO}_2$ ends each chelating a 2,2'-bipyridine chelated Co^{II} atom to generate a helical polymeric chain that runs along the *b*-axis of the monoclinic unit cell (Fig. 2). The Co^{II} atom shows octahedral coordination. The lattice water molecule is disordered about a center-of-inversion and is connected to the chain by an $\text{O}-\text{H}\cdots\text{O}$ hydrogen bond (Table 1).

Experimental

2,3-Bis-(3-bromophenyl)-2-butene was synthesized from the cross-coupling of 3-bromoacetophenone catalyzed by low-valent titanium (McMurry, 1989).

2,3-Bis-(3-bromophenyl)-2-butene (17.3 g, 0.048 mol) was added to a solution of *n*-butyllithium (2.5 *M* in hexane, 40 ml, 0.10 mol) in ether (400 ml) at 200 K. The reaction was carried out under nitrogen. The mixture was warmed to room temperature and then stirred overnight. The reaction was quenched with water (100 ml) and the organic compounds were extracted with ether. The aqueous phase was adjusted to a pH of 1 by the addition of concentrated hydrochloric acid. The precipitate was collected, washed with ethyl acetate and dried to yield 3,3'-(but-2-ene-2,3-diyl)dibenzoic acid (yield 9.8 g, 70%) as a mixture of *E* and *Z* isomers.

3,3'-(But-2-ene-2,3-diyl)dibenzoic acid (10 g, 0.034 mol), thionyl chloride (12.0 ml) and methanol (150 ml) were heated for 2 h. The solvent was evaporated and the residue was purified by silica gel chromatography to yield 2.2 g of (*Z*)-dimethyl 3,3'-(but-2-ene-2,3-diyl)dibenzoate and 6.6 g of (*E*)-dimethyl 3,3'-(but-2-ene-2,3-diyl)dibenzoate.

To (*E*)-dimethyl 3,3'-(but-2-ene-2,3-diyl)dibenzoate (5.0 g, 15.4 mmol) in THF (30 ml) was added lithium hydroxide (1.48 g, 61.6 mmol) in water (30 ml). The mixture was stirred overnight. The solvent was removed and then acidified with concentrated hydrochloric acid; the reaction was carried out at 273 K. The precipitate was collected, washed with ethyl acetate and dried to give to (*E*)-3,3'-(but-2-ene-2,3-diyl)dibenzoic acid (yield 4.3 g, 95%) as a white solid.

supplementary materials

(*E*)-3,3'-(But-2-ene-2,3-diyl)dibenzoic acid (15.3 mg, 0.05 mmol), sodium hydroxide (4.1 mg, 0.10 mmol), cobalt(II) chloride hexahydrate (11.8 mg, 0.05 mmol) and 2,2'-bipyridine (7.8 mg, 0.05 mol) were mixed in water (4 ml). This was transferred to a 25-mL Teflon-lined stainless-steel Parr bomb. The bomb was heated at 408 K for 3 days. The bomb was cooled slowly to room temperature. Red block-shaped crystals were obtained; yield: 10.8 mg (40% based on the acid). CH&N elemental analysis. Calcd. (%): C, 65.00; H, 4.22; N, 5.33. Found (%): C, 65.29; H, 4.05; N, 5.32.

Refinement

Carbon-bound H-atoms were placed in calculated positions (C—H 0.93 to 0.96 Å) and were included in the refinement in the riding model approximation, with $U(\text{H})$ set to 1.2 to 1.5 $U(\text{C})$.

The water molecule lies near a center-of-inversion, and was assigned half site-occupancy. The H atoms were placed in a chemically sensible position on the basis of one hydrogen bonding interaction.

Figures

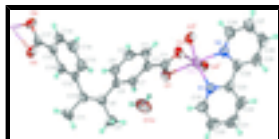


Fig. 1. Anisotropic ellipsoid plot (Barbour, 2001) of a portion of polymeric $\text{Co}(\text{C}_{10}\text{H}_8\text{N}_2)(\text{C}_{18}\text{H}_{14}\text{O}_4)\cdot 0.5\text{H}_2\text{O}$ at the 50% probability level; hydrogen atoms are drawn as spheres of arbitrary radius.

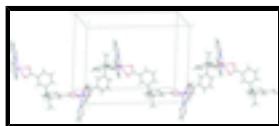


Fig. 2. Chain structure; the lattice water molecules are not shown.

catena-Poly[[[(2,2'-bipyridine- $\kappa^2\text{N},\text{N}'$)cobalt(II)]- μ -(*E*)-3,3'-(but-2-ene-2,3-diyl)dibenzoato- $\kappa^4\text{O},\text{O}':\text{O}'',\text{O}'''$]] hemihydrate]

Crystal data

$[\text{Co}(\text{C}_{18}\text{H}_{14}\text{O}_4)(\text{C}_{10}\text{H}_8\text{N}_2)]\cdot 0.5\text{H}_2\text{O}$

$M_r = 518.41$

Monoclinic, $P2_1/n$

Hall symbol: $-P\ 2_1/n$

$a = 8.7028$ (9) Å

$b = 19.872$ (2) Å

$c = 14.5181$ (14) Å

$\beta = 97.845$ (2)°

$V = 2487.2$ (4) Å³

$Z = 4$

$F(000) = 1072$

$D_x = 1.384$ Mg m⁻³

Mo $K\alpha$ radiation, $\lambda = 0.71073$ Å

Cell parameters from 2090 reflections

$\theta = 2.6$ – 21.1 °

$\mu = 0.73$ mm⁻¹

$T = 293$ K

Plate, red

$0.28 \times 0.17 \times 0.05$ mm

Data collection

Bruker SMART APEX
diffractometer

Radiation source: fine-focus sealed tube

5667 independent reflections

3153 reflections with $I > 2\sigma(I)$

graphite $R_{\text{int}} = 0.046$
 ω scans $\theta_{\text{max}} = 27.5^\circ$, $\theta_{\text{min}} = 1.8^\circ$
 Absorption correction: multi-scan
 (SADABS; Sheldrick, 1996) $h = -10 \rightarrow 11$
 $T_{\text{min}} = 0.822$, $T_{\text{max}} = 0.965$ $k = -23 \rightarrow 25$
 14695 measured reflections $l = -18 \rightarrow 14$

Refinement

Refinement on F^2 Primary atom site location: structure-invariant direct methods
 Least-squares matrix: full Secondary atom site location: difference Fourier map
 $R[F^2 > 2\sigma(F^2)] = 0.045$ Hydrogen site location: inferred from neighbouring sites
 $wR(F^2) = 0.119$ H-atom parameters constrained
 $S = 0.96$ $w = 1/[\sigma^2(F_o^2) + (0.0535P)^2]$
 where $P = (F_o^2 + 2F_c^2)/3$
 5667 reflections $(\Delta/\sigma)_{\text{max}} = 0.001$
 327 parameters $\Delta\rho_{\text{max}} = 0.23 \text{ e } \text{\AA}^{-3}$
 6 restraints $\Delta\rho_{\text{min}} = -0.20 \text{ e } \text{\AA}^{-3}$

Fractional atomic coordinates and isotropic or equivalent isotropic displacement parameters (\AA^2)

	<i>x</i>	<i>y</i>	<i>z</i>	$U_{\text{iso}}^*/U_{\text{eq}}$	Occ. (<1)
Co1	0.72581 (4)	0.433780 (19)	0.65569 (3)	0.05411 (15)	
O1	0.6416 (2)	0.49163 (10)	0.76819 (13)	0.0630 (5)	
O2	0.6521 (2)	0.53304 (10)	0.63038 (14)	0.0648 (6)	
O3	-0.0199 (2)	0.88087 (10)	0.90530 (14)	0.0629 (5)	
O4	-0.2047 (2)	0.83205 (10)	0.81231 (14)	0.0659 (6)	
O1W	0.6236 (8)	0.4682 (3)	0.9574 (3)	0.125 (2)	0.50
H11	0.6219	0.4775	0.9009	0.188*	0.50
H12	0.5499	0.4883	0.9774	0.188*	0.50
N1	0.9576 (3)	0.44197 (11)	0.71738 (18)	0.0564 (6)	
N2	0.8468 (3)	0.41977 (11)	0.54323 (17)	0.0555 (6)	
C1	0.6243 (3)	0.54056 (14)	0.7128 (2)	0.0507 (7)	
C2	0.5758 (3)	0.60753 (14)	0.74361 (19)	0.0468 (6)	
C3	0.5469 (3)	0.66010 (15)	0.68050 (19)	0.0526 (7)	
H3	0.5576	0.6534	0.6183	0.063*	
C4	0.5025 (3)	0.72181 (15)	0.7100 (2)	0.0590 (8)	
H4	0.4817	0.7567	0.6674	0.071*	
C5	0.4887 (3)	0.73232 (15)	0.8025 (2)	0.0571 (7)	
H5	0.4581	0.7744	0.8215	0.069*	
C6	0.5193 (3)	0.68143 (14)	0.86754 (18)	0.0497 (7)	
C7	0.5619 (3)	0.61921 (14)	0.83632 (18)	0.0490 (7)	
H7	0.5817	0.5842	0.8788	0.059*	
C8	0.5183 (3)	0.69319 (14)	0.96955 (19)	0.0547 (7)	
C9	0.6782 (4)	0.69610 (19)	1.0248 (2)	0.0845 (11)	
H9A	0.7295	0.7366	1.0096	0.127*	

supplementary materials

H9B	0.7373	0.6577	1.0100	0.127*
H9C	0.6696	0.6958	1.0900	0.127*
C10	0.3872 (4)	0.70120 (14)	1.00524 (19)	0.0569 (7)
C11	0.3799 (4)	0.71311 (19)	1.1077 (2)	0.0856 (11)
H11A	0.3364	0.6743	1.1338	0.128*
H11B	0.3160	0.7516	1.1148	0.128*
H11C	0.4825	0.7210	1.1393	0.128*
C12	0.2327 (3)	0.70095 (14)	0.94623 (19)	0.0528 (7)
C13	0.1647 (4)	0.64333 (16)	0.9054 (2)	0.0682 (9)
H13	0.2170	0.6025	0.9137	0.082*
C14	0.0202 (4)	0.64560 (16)	0.8527 (2)	0.0714 (9)
H14	-0.0243	0.6062	0.8268	0.086*
C15	-0.0583 (3)	0.70517 (15)	0.83819 (19)	0.0570 (7)
H15	-0.1548	0.7063	0.8017	0.068*
C16	0.0063 (3)	0.76353 (14)	0.87795 (18)	0.0494 (7)
C17	-0.0770 (3)	0.82881 (14)	0.8639 (2)	0.0516 (7)
C18	0.1496 (3)	0.76036 (14)	0.93232 (19)	0.0522 (7)
H18	0.1916	0.7995	0.9605	0.063*
C19	1.0053 (4)	0.45294 (16)	0.8071 (3)	0.0727 (9)
H19	0.9311	0.4587	0.8468	0.087*
C20	1.1591 (4)	0.45614 (18)	0.8438 (3)	0.0845 (11)
H20	1.1881	0.4646	0.9068	0.101*
C21	1.2687 (4)	0.44668 (18)	0.7861 (4)	0.0916 (12)
H21	1.3736	0.4483	0.8094	0.110*
C22	1.2228 (4)	0.43482 (16)	0.6937 (3)	0.0752 (10)
H22	1.2961	0.4282	0.6536	0.090*
C23	1.0648 (3)	0.43281 (13)	0.6601 (2)	0.0560 (7)
C24	1.0024 (3)	0.42047 (12)	0.5620 (2)	0.0534 (7)
C25	1.0942 (4)	0.41078 (15)	0.4925 (3)	0.0668 (9)
H25	1.2017	0.4130	0.5057	0.080*
C26	1.0246 (4)	0.39784 (16)	0.4041 (3)	0.0786 (10)
H26	1.0850	0.3902	0.3570	0.094*
C27	0.8642 (4)	0.39610 (17)	0.3846 (2)	0.0772 (10)
H27	0.8151	0.3868	0.3250	0.093*
C28	0.7805 (4)	0.40859 (16)	0.4565 (2)	0.0690 (9)
H28	0.6728	0.4093	0.4440	0.083*

Atomic displacement parameters (\AA^2)

	U^{11}	U^{22}	U^{33}	U^{12}	U^{13}	U^{23}
Co1	0.0452 (2)	0.0561 (3)	0.0637 (3)	-0.00109 (18)	0.01649 (18)	-0.00717 (19)
O1	0.0733 (14)	0.0552 (13)	0.0637 (13)	0.0107 (10)	0.0214 (10)	-0.0004 (10)
O2	0.0729 (14)	0.0641 (13)	0.0623 (13)	0.0021 (11)	0.0270 (11)	-0.0056 (10)
O3	0.0502 (11)	0.0490 (12)	0.0899 (15)	-0.0008 (9)	0.0108 (10)	-0.0069 (11)
O4	0.0546 (13)	0.0654 (14)	0.0750 (14)	0.0052 (10)	-0.0008 (11)	-0.0053 (11)
O1W	0.195 (6)	0.101 (4)	0.076 (3)	0.032 (4)	0.004 (4)	0.017 (3)
N1	0.0516 (14)	0.0506 (15)	0.0675 (17)	0.0005 (11)	0.0100 (13)	-0.0047 (12)
N2	0.0477 (14)	0.0553 (15)	0.0660 (17)	-0.0051 (11)	0.0173 (12)	-0.0059 (12)

C1	0.0376 (14)	0.0565 (18)	0.060 (2)	-0.0061 (12)	0.0143 (13)	-0.0038 (15)
C2	0.0357 (14)	0.0509 (17)	0.0553 (18)	-0.0017 (12)	0.0121 (12)	-0.0022 (13)
C3	0.0452 (15)	0.063 (2)	0.0500 (17)	-0.0050 (13)	0.0085 (13)	-0.0020 (14)
C4	0.0589 (18)	0.0581 (19)	0.059 (2)	0.0031 (14)	0.0046 (15)	0.0098 (15)
C5	0.0559 (18)	0.0522 (18)	0.063 (2)	0.0081 (13)	0.0087 (15)	-0.0016 (15)
C6	0.0432 (15)	0.0542 (18)	0.0518 (17)	0.0053 (13)	0.0074 (13)	-0.0008 (14)
C7	0.0447 (15)	0.0525 (17)	0.0504 (18)	0.0053 (12)	0.0085 (13)	0.0065 (13)
C8	0.0573 (18)	0.0546 (18)	0.0519 (18)	0.0078 (14)	0.0069 (14)	-0.0023 (13)
C9	0.071 (2)	0.111 (3)	0.069 (2)	0.020 (2)	-0.0006 (18)	-0.007 (2)
C10	0.0654 (19)	0.0571 (18)	0.0490 (17)	0.0085 (15)	0.0102 (15)	-0.0058 (14)
C11	0.092 (3)	0.112 (3)	0.054 (2)	0.021 (2)	0.0129 (18)	-0.0125 (19)
C12	0.0551 (17)	0.0531 (18)	0.0540 (18)	0.0050 (14)	0.0212 (14)	-0.0063 (14)
C13	0.072 (2)	0.056 (2)	0.078 (2)	0.0121 (16)	0.0171 (18)	-0.0117 (16)
C14	0.073 (2)	0.054 (2)	0.086 (2)	-0.0048 (16)	0.0092 (19)	-0.0178 (17)
C15	0.0517 (17)	0.061 (2)	0.0591 (19)	-0.0024 (14)	0.0079 (14)	-0.0079 (15)
C16	0.0511 (16)	0.0510 (17)	0.0499 (17)	-0.0044 (13)	0.0203 (13)	-0.0050 (13)
C17	0.0474 (17)	0.0536 (18)	0.0587 (19)	-0.0001 (14)	0.0242 (14)	-0.0004 (14)
C18	0.0505 (16)	0.0525 (18)	0.0560 (17)	-0.0027 (13)	0.0156 (14)	-0.0093 (13)
C19	0.067 (2)	0.071 (2)	0.079 (3)	0.0006 (16)	0.0034 (19)	-0.0085 (18)
C20	0.076 (3)	0.082 (3)	0.089 (3)	-0.0013 (19)	-0.011 (2)	-0.004 (2)
C21	0.058 (2)	0.087 (3)	0.123 (4)	-0.0026 (19)	-0.011 (2)	0.010 (2)
C22	0.0490 (18)	0.068 (2)	0.110 (3)	0.0052 (16)	0.0142 (19)	0.009 (2)
C23	0.0467 (16)	0.0398 (15)	0.083 (2)	0.0018 (12)	0.0147 (16)	0.0018 (15)
C24	0.0496 (16)	0.0379 (16)	0.077 (2)	0.0009 (12)	0.0226 (15)	0.0019 (13)
C25	0.063 (2)	0.0564 (19)	0.087 (3)	0.0040 (15)	0.0340 (19)	0.0061 (17)
C26	0.090 (3)	0.067 (2)	0.090 (3)	0.0024 (19)	0.052 (2)	0.0011 (19)
C27	0.089 (3)	0.080 (2)	0.068 (2)	-0.013 (2)	0.030 (2)	-0.0066 (18)
C28	0.063 (2)	0.075 (2)	0.073 (2)	-0.0135 (16)	0.0221 (18)	-0.0075 (18)

Geometric parameters (Å, °)

Co1—N2	2.079 (2)	C10—C12	1.492 (4)
Co1—O4 ⁱ	2.088 (2)	C10—C11	1.515 (4)
Co1—O2	2.091 (2)	C11—H11A	0.9600
Co1—N1	2.099 (2)	C11—H11B	0.9600
Co1—O3 ⁱ	2.1602 (18)	C11—H11C	0.9600
Co1—O1	2.2030 (19)	C12—C13	1.385 (4)
O1—C1	1.257 (3)	C12—C18	1.385 (4)
O2—C1	1.262 (3)	C13—C14	1.381 (4)
O3—C17	1.264 (3)	C13—H13	0.9300
O3—Co1 ⁱⁱ	2.1602 (18)	C14—C15	1.369 (4)
O4—C17	1.254 (3)	C14—H14	0.9300
O4—Co1 ⁱⁱ	2.088 (2)	C15—C16	1.381 (3)
O1W—H11	0.8400	C15—H15	0.9300
O1W—H12	0.8401	C16—C18	1.383 (4)
N1—C19	1.330 (4)	C16—C17	1.487 (4)
N1—C23	1.344 (4)	C17—Co1 ⁱⁱ	2.451 (3)
N2—C28	1.330 (3)	C18—H18	0.9300

supplementary materials

N2—C24	1.345 (3)	C19—C20	1.372 (4)
C1—C2	1.483 (4)	C19—H19	0.9300
C2—C7	1.387 (3)	C20—C21	1.366 (5)
C2—C3	1.390 (4)	C20—H20	0.9300
C3—C4	1.371 (4)	C21—C22	1.367 (5)
C3—H3	0.9300	C21—H21	0.9300
C4—C5	1.382 (4)	C22—C23	1.395 (4)
C4—H4	0.9300	C22—H22	0.9300
C5—C6	1.384 (4)	C23—C24	1.473 (4)
C5—H5	0.9300	C24—C25	1.384 (4)
C6—C7	1.385 (4)	C25—C26	1.366 (4)
C6—C8	1.501 (4)	C25—H25	0.9300
C7—H7	0.9300	C26—C27	1.387 (5)
C8—C10	1.325 (4)	C26—H26	0.9300
C8—C9	1.510 (4)	C27—C28	1.375 (4)
C9—H9A	0.9600	C27—H27	0.9300
C9—H9B	0.9600	C28—H28	0.9300
C9—H9C	0.9600		
N2—Co1—O4 ⁱ	96.57 (8)	C10—C11—H11B	109.5
N2—Co1—O2	99.46 (8)	H11A—C11—H11B	109.5
O4 ⁱ —Co1—O2	156.66 (8)	C10—C11—H11C	109.5
N2—Co1—N1	77.60 (10)	H11A—C11—H11C	109.5
O4 ⁱ —Co1—N1	95.09 (8)	H11B—C11—H11C	109.5
O2—Co1—N1	104.82 (8)	C13—C12—C18	117.3 (3)
N2—Co1—O3 ⁱ	95.36 (9)	C13—C12—C10	123.2 (3)
O4 ⁱ —Co1—O3 ⁱ	61.75 (7)	C18—C12—C10	119.5 (3)
O2—Co1—O3 ⁱ	99.77 (8)	C12—C13—C14	120.9 (3)
N1—Co1—O3 ⁱ	155.20 (8)	C12—C13—H13	119.5
N2—Co1—O1	155.19 (8)	C14—C13—H13	119.5
O4 ⁱ —Co1—O1	106.98 (8)	C15—C14—C13	120.8 (3)
O2—Co1—O1	60.85 (7)	C15—C14—H14	119.6
N1—Co1—O1	92.34 (9)	C13—C14—H14	119.6
O3 ⁱ —Co1—O1	102.51 (8)	C14—C15—C16	119.7 (3)
C1—O1—Co1	87.29 (16)	C14—C15—H15	120.1
C1—O2—Co1	92.23 (17)	C16—C15—H15	120.1
C17—O3—Co1 ⁱⁱ	87.33 (16)	C15—C16—C18	119.0 (3)
C17—O4—Co1 ⁱⁱ	90.83 (16)	C15—C16—C17	120.8 (3)
H11—O1W—H12	108.6	C18—C16—C17	120.2 (3)
C19—N1—C23	118.5 (3)	O4—C17—O3	120.0 (3)
C19—N1—Co1	125.8 (2)	O4—C17—C16	120.2 (3)
C23—N1—Co1	115.7 (2)	O3—C17—C16	119.8 (3)
C28—N2—C24	119.2 (3)	O4—C17—Co1 ⁱⁱ	58.40 (14)
C28—N2—Co1	124.42 (19)	O3—C17—Co1 ⁱⁱ	61.68 (14)
C24—N2—Co1	116.3 (2)	C16—C17—Co1 ⁱⁱ	177.01 (19)
O1—C1—O2	119.5 (3)	C16—C18—C12	122.3 (3)
O1—C1—C2	121.0 (3)	C16—C18—H18	118.9

O2—C1—C2	119.4 (3)	C12—C18—H18	118.9
C7—C2—C3	118.8 (3)	N1—C19—C20	123.1 (4)
C7—C2—C1	120.5 (3)	N1—C19—H19	118.5
C3—C2—C1	120.6 (2)	C20—C19—H19	118.5
C4—C3—C2	120.0 (3)	C21—C20—C19	118.7 (4)
C4—C3—H3	120.0	C21—C20—H20	120.6
C2—C3—H3	120.0	C19—C20—H20	120.6
C3—C4—C5	120.3 (3)	C22—C21—C20	119.4 (3)
C3—C4—H4	119.9	C22—C21—H21	120.3
C5—C4—H4	119.9	C20—C21—H21	120.3
C4—C5—C6	121.2 (3)	C21—C22—C23	119.3 (3)
C4—C5—H5	119.4	C21—C22—H22	120.3
C6—C5—H5	119.4	C23—C22—H22	120.3
C5—C6—C7	117.7 (3)	N1—C23—C22	120.9 (3)
C5—C6—C8	122.2 (3)	N1—C23—C24	115.2 (2)
C7—C6—C8	120.0 (2)	C22—C23—C24	123.9 (3)
C6—C7—C2	122.0 (3)	N2—C24—C25	121.1 (3)
C6—C7—H7	119.0	N2—C24—C23	115.2 (2)
C2—C7—H7	119.0	C25—C24—C23	123.7 (3)
C10—C8—C6	121.8 (3)	C26—C25—C24	119.1 (3)
C10—C8—C9	124.6 (3)	C26—C25—H25	120.5
C6—C8—C9	113.6 (2)	C24—C25—H25	120.5
C8—C9—H9A	109.5	C25—C26—C27	120.1 (3)
C8—C9—H9B	109.5	C25—C26—H26	119.9
H9A—C9—H9B	109.5	C27—C26—H26	119.9
C8—C9—H9C	109.5	C28—C27—C26	117.6 (3)
H9A—C9—H9C	109.5	C28—C27—H27	121.2
H9B—C9—H9C	109.5	C26—C27—H27	121.2
C8—C10—C12	122.1 (2)	N2—C28—C27	122.9 (3)
C8—C10—C11	123.8 (3)	N2—C28—H28	118.6
C12—C10—C11	114.1 (3)	C27—C28—H28	118.6
C10—C11—H11A	109.5		
N2—Co1—O1—C1	38.9 (3)	C6—C8—C10—C12	-1.7 (4)
O4 ⁱ —Co1—O1—C1	-160.09 (16)	C9—C8—C10—C12	177.1 (3)
O2—Co1—O1—C1	-1.82 (15)	C6—C8—C10—C11	179.9 (3)
N1—Co1—O1—C1	103.86 (16)	C9—C8—C10—C11	-1.3 (5)
O3 ⁱ —Co1—O1—C1	-96.14 (16)	C8—C10—C12—C13	72.2 (4)
N2—Co1—O2—C1	-162.06 (17)	C11—C10—C12—C13	-109.3 (3)
O4 ⁱ —Co1—O2—C1	65.2 (3)	C8—C10—C12—C18	-109.3 (3)
N1—Co1—O2—C1	-82.50 (18)	C11—C10—C12—C18	69.2 (4)
O3 ⁱ —Co1—O2—C1	100.77 (17)	C18—C12—C13—C14	0.4 (4)
O1—Co1—O2—C1	1.81 (15)	C10—C12—C13—C14	178.9 (3)
N2—Co1—N1—C19	-179.5 (2)	C12—C13—C14—C15	1.1 (5)
O4 ⁱ —Co1—N1—C19	-83.9 (2)	C13—C14—C15—C16	-1.1 (5)
O2—Co1—N1—C19	83.8 (2)	C14—C15—C16—C18	-0.3 (4)
O3 ⁱ —Co1—N1—C19	-103.9 (3)	C14—C15—C16—C17	-179.5 (3)
O1—Co1—N1—C19	23.4 (2)	Co1 ⁱⁱ —O4—C17—O3	-2.0 (3)

supplementary materials

N2—Co1—N1—C23	-1.95 (18)	Co1 ⁱⁱ —O4—C17—C16	176.9 (2)
O4 ⁱ —Co1—N1—C23	93.68 (19)	Co1 ⁱⁱ —O3—C17—O4	2.0 (3)
O2—Co1—N1—C23	-98.61 (19)	Co1 ⁱⁱ —O3—C17—C16	-177.0 (2)
O3 ⁱ —Co1—N1—C23	73.7 (3)	C15—C16—C17—O4	-3.1 (4)
O1—Co1—N1—C23	-159.04 (19)	C18—C16—C17—O4	177.8 (3)
O4 ⁱ —Co1—N2—C28	86.1 (2)	C15—C16—C17—O3	175.9 (2)
O2—Co1—N2—C28	-76.9 (2)	C18—C16—C17—O3	-3.3 (4)
N1—Co1—N2—C28	179.9 (2)	C15—C16—C18—C12	1.8 (4)
O3 ⁱ —Co1—N2—C28	24.0 (2)	C17—C16—C18—C12	-179.0 (2)
O1—Co1—N2—C28	-112.2 (3)	C13—C12—C18—C16	-1.8 (4)
O4 ⁱ —Co1—N2—C24	-91.99 (19)	C10—C12—C18—C16	179.6 (3)
O2—Co1—N2—C24	105.04 (19)	C23—N1—C19—C20	0.8 (4)
N1—Co1—N2—C24	1.81 (18)	Co1—N1—C19—C20	178.3 (2)
O3 ⁱ —Co1—N2—C24	-154.10 (19)	N1—C19—C20—C21	-1.0 (5)
O1—Co1—N2—C24	69.7 (3)	C19—C20—C21—C22	0.5 (5)
Co1—O1—C1—O2	3.0 (3)	C20—C21—C22—C23	0.2 (5)
Co1—O1—C1—C2	-175.3 (2)	C19—N1—C23—C22	-0.1 (4)
Co1—O2—C1—O1	-3.2 (3)	Co1—N1—C23—C22	-177.9 (2)
Co1—O2—C1—C2	175.1 (2)	C19—N1—C23—C24	179.6 (2)
O1—C1—C2—C7	5.8 (4)	Co1—N1—C23—C24	1.8 (3)
O2—C1—C2—C7	-172.5 (2)	C21—C22—C23—N1	-0.4 (4)
O1—C1—C2—C3	-175.7 (2)	C21—C22—C23—C24	180.0 (3)
O2—C1—C2—C3	6.0 (4)	C28—N2—C24—C25	1.0 (4)
C7—C2—C3—C4	-1.3 (4)	Co1—N2—C24—C25	179.2 (2)
C1—C2—C3—C4	-179.8 (2)	C28—N2—C24—C23	-179.6 (2)
C2—C3—C4—C5	1.0 (4)	Co1—N2—C24—C23	-1.4 (3)
C3—C4—C5—C6	0.2 (4)	N1—C23—C24—N2	-0.3 (3)
C4—C5—C6—C7	-1.1 (4)	C22—C23—C24—N2	179.4 (3)
C4—C5—C6—C8	174.7 (3)	N1—C23—C24—C25	179.1 (3)
C5—C6—C7—C2	0.8 (4)	C22—C23—C24—C25	-1.2 (4)
C8—C6—C7—C2	-175.1 (2)	N2—C24—C25—C26	-2.5 (4)
C3—C2—C7—C6	0.4 (4)	C23—C24—C25—C26	178.2 (3)
C1—C2—C7—C6	178.9 (2)	C24—C25—C26—C27	1.5 (5)
C5—C6—C8—C10	74.1 (4)	C25—C26—C27—C28	0.8 (5)
C7—C6—C8—C10	-110.3 (3)	C24—N2—C28—C27	1.5 (4)
C5—C6—C8—C9	-104.9 (3)	Co1—N2—C28—C27	-176.5 (2)
C7—C6—C8—C9	70.8 (3)	C26—C27—C28—N2	-2.4 (5)

Symmetry codes: (i) $-x+1/2, y-1/2, -z+3/2$; (ii) $-x+1/2, y+1/2, -z+3/2$.

Hydrogen-bond geometry ($\text{\AA}, ^\circ$)

$D-H\cdots A$	$D-H$	$H\cdots A$	$D\cdots A$	$D-H\cdots A$
O1w—H11 \cdots O1	0.84	1.98	2.812 (5)	173

Fig. 1

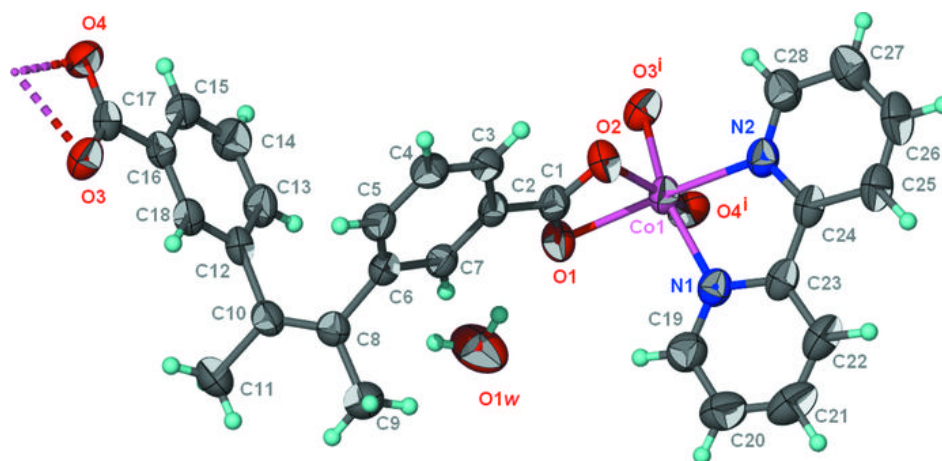


Fig. 2

